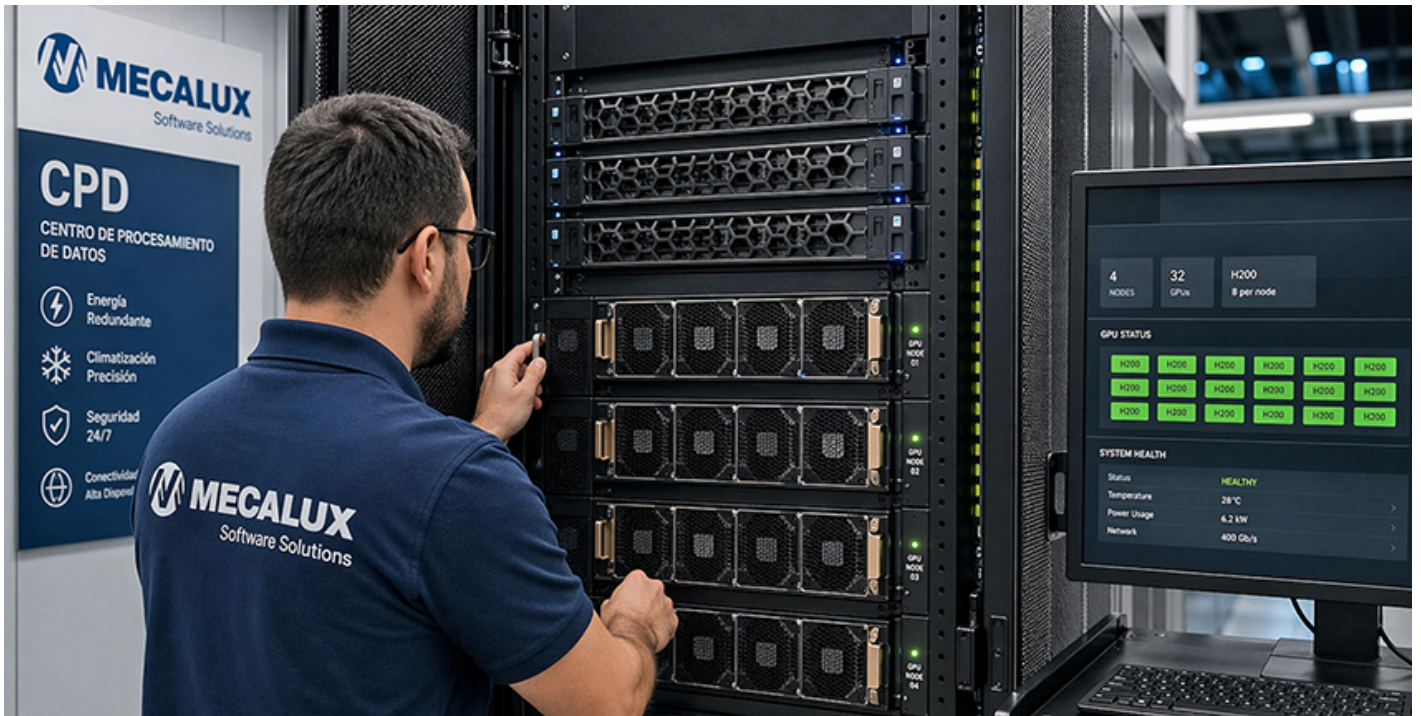


Mecalux scales up its tech stack to drive AI agents across its software suite



[Mecalux](#) has strengthened its technology infrastructure with a new high-performance computing platform designed to accelerate the use of AI agents in its [logistics software solutions](#). This strategic investment will enable the creation and deployment of different types of **intelligent entities that businesses can configure** to support warehouse decision-making.

AI agents represent a new and rapidly growing generation of software capable of performing actions autonomously to complete tasks or achieve specific goals. Mecalux's agents will work alongside users in their day-to-day activities, helping them continuously monitor logistics operations and improve efficiency. Organisations will have access to a **catalogue of intelligent entities** they can activate and configure according to their needs. Examples include **assistants specialised in advanced analytics and operations optimisation**.

“This expansion of our AI infrastructure is a key step in advancing agent-based capabilities within our software solutions,” Mecalux said. “Our goal is to enable companies to **automate complex digital processes** in their warehouses using this intelligent technology.”

The new infrastructure is designed to train deep learning models and evaluate the performance of AI agents to increase their accuracy. This investment is part of **Mecalux's broader strategy to**

strengthen its AI capabilities and further advance its software solutions with user-centric features.